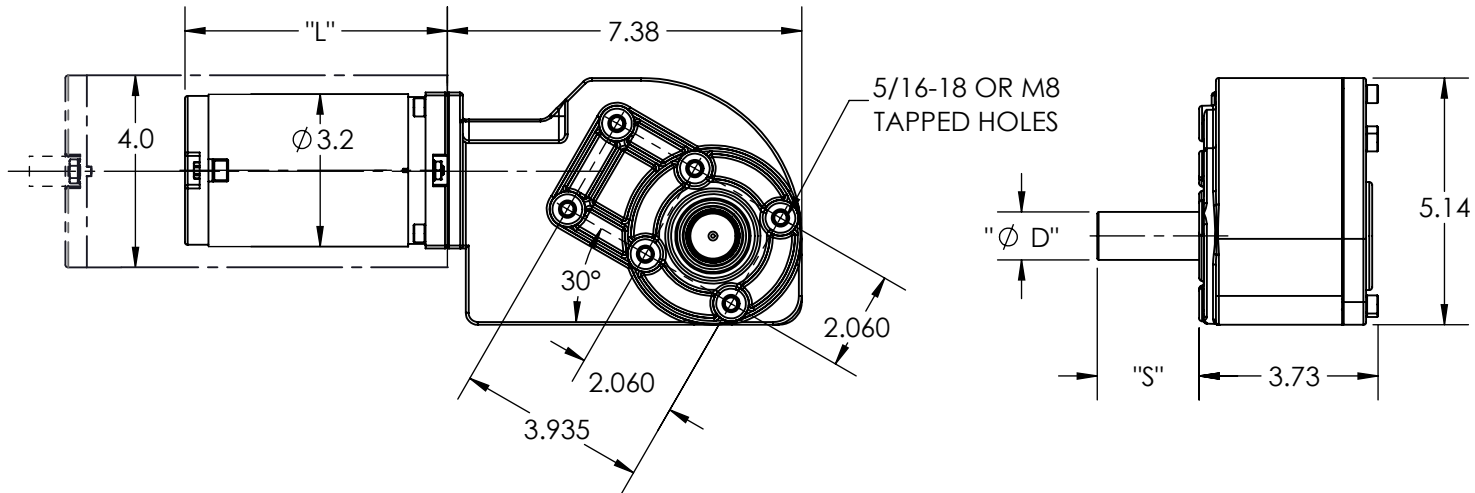
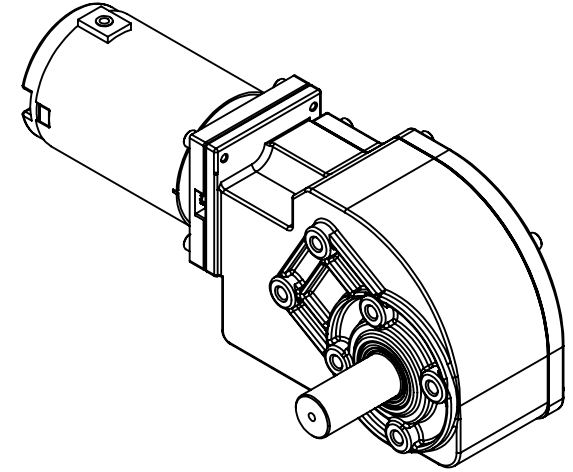



SPECIFICATIONS	
INPUT VOLTAGE	12VDC / 240 VDC
OUTPUT SPEED	3-150 RPM
OUTPUT TORQUE	UP TO 5000 IN-LBS
GEAR RATIO	50:1 - 1500:1
LENGTH "L"	4.00 / 8.75
SHAFT DIA. "Ø D"	UP TO Ø 1.00
SHAFT EXT. "S"	AS REQUESTED
SHAFT FEATURE	HOB, FLAT, KEYWAY, OR AS REQUESTED
MOUNTING	FACE, FOOT MOUNT
BRUSHES	INTERNAL, OR EXTERNAL REPLACEABLE
LEAD WIRES	AS REQUESTED
BEARINGS	BALL BEARING
VENTING	ENCLOSED / VENTED / FAN COOLED
INSULATION	UL CLASS H
MOTOR TYPE	SERIES DM32 OR DM40



REV.	DESCRIPTION	DATE	ECN
------	-------------	------	-----

DESIGN APPROVAL	DATE	UNSPECIFIED TOLERANCES .XXX ± .005 .XX ± .015 .X ± .050 MACHINE FINISH ± 1° ANGLES .005 TIR CONCENTRICITY .001 PER IN. SQUARENESS	This Drawing is the property of the Dumore Corporation. It must not be reproduced or copied without written permission.	 DUMORE CORPORATION 1030 VETERANS ST. MAUSTON, WI 53948	PART NO.
DES. ENG.					DR800
MFG. ENG.					
Q.C.					
SALES					
DO NOT SCALE DRAWING		REMOVE ALL BURRS BREAK SHARP CORNERS	TITLE GEARMOTOR ASSEMBLY, DR800		
MATERIAL SPEC.		Req. per Piece	RECEIVED AS	DWG. BY	DATE
		Pattern No.		CRD. BY	DATE
					SCALE 1:4